

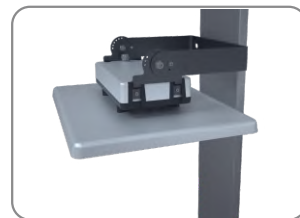
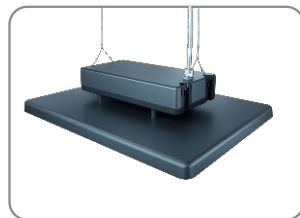
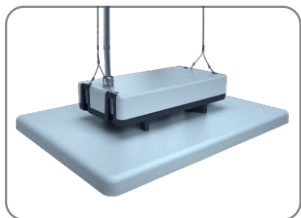


Redefine Anti-Glaring

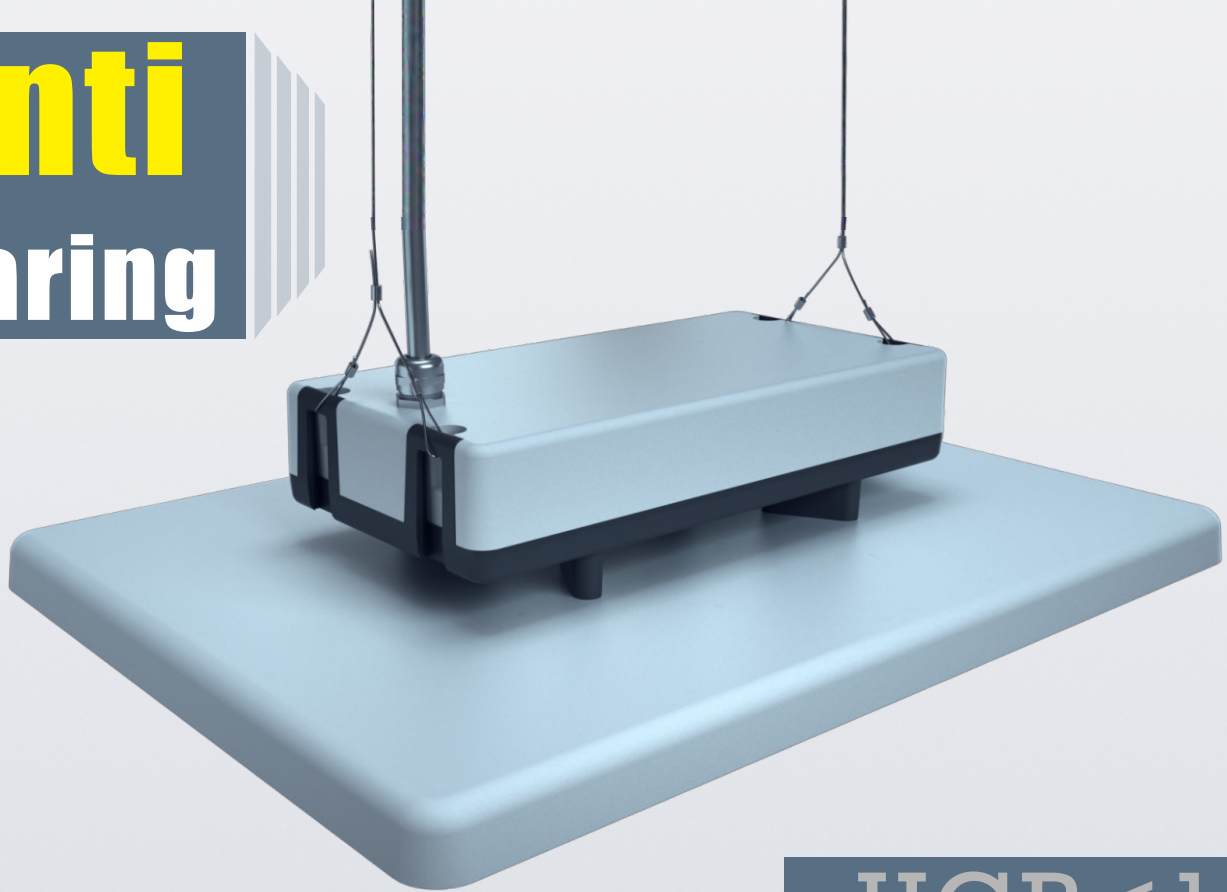
“

Anti-glaring light is required more and more for applications where people doesn't feel comfortable with the glaring light, especially when the lights were not very high. Mildbeam is the ideal solution for visual protection. This increases the performance of staff and the quality of their work.

”



Anti Glaring

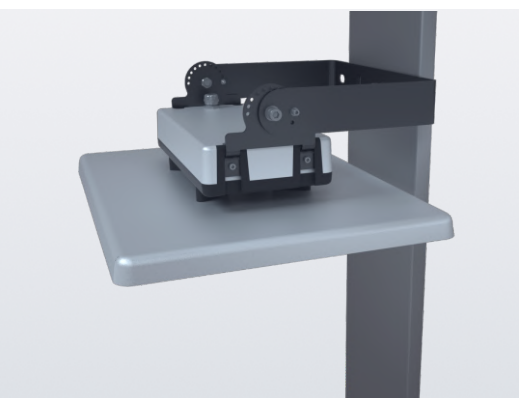
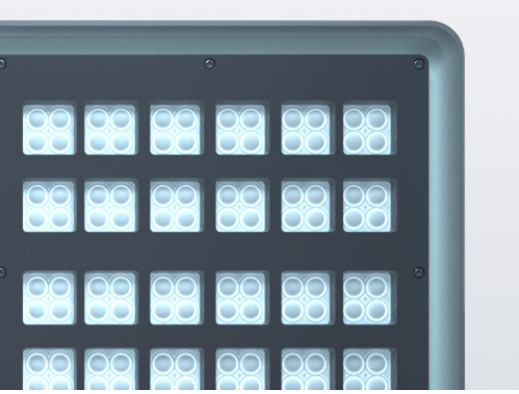


UGR<19

Anti-glaring light is required more and more for applications where people doesn't feel comfortable with the glaring light, especially when the light were not very high. MILDBEAM is the ideal solution for visual protection. This increases the performance of staff and the quality of their work.



UGR < 19

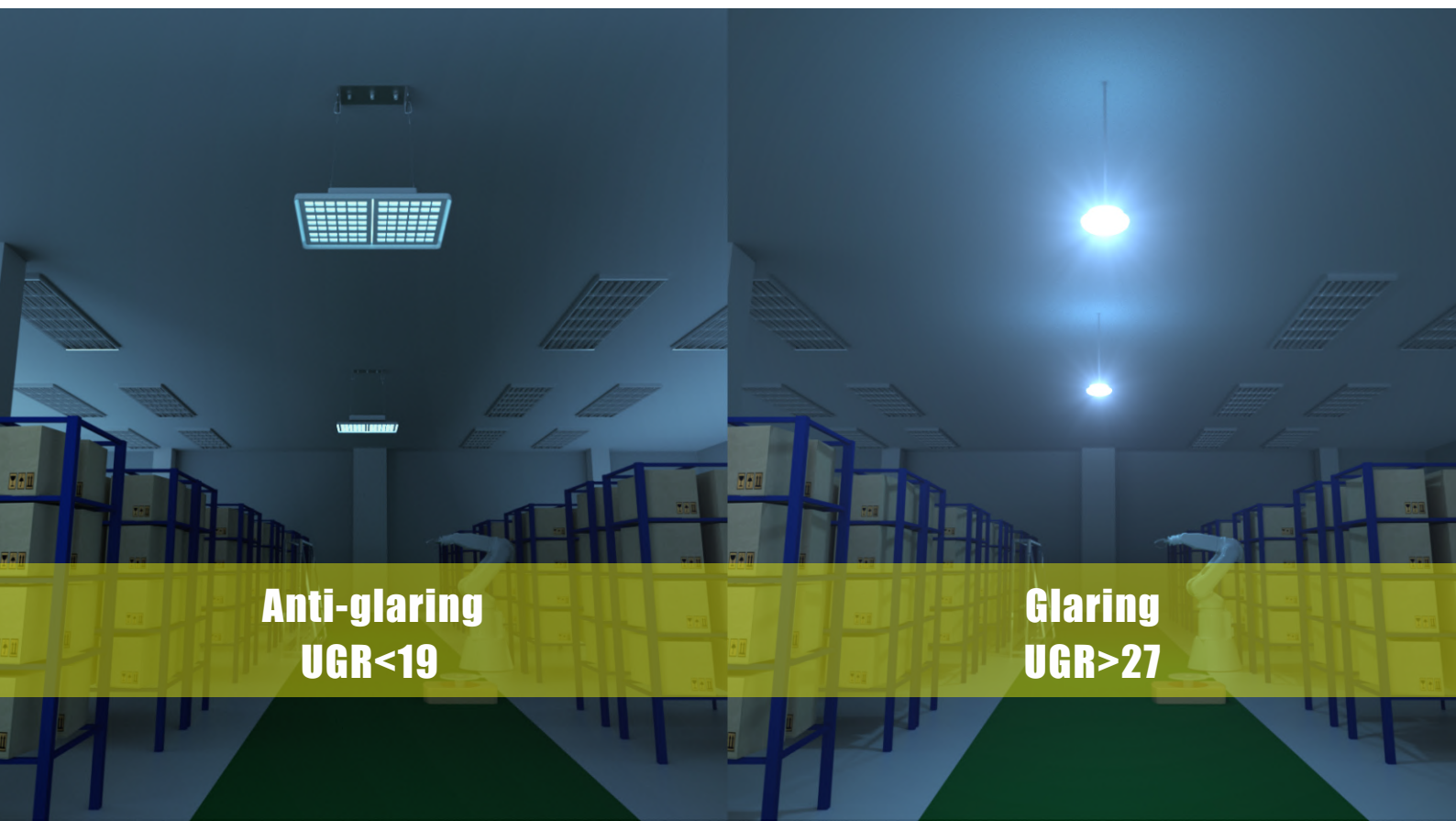


- **Advanced UGR technology**

The Optics was specially developed to minimize glare and maximize homogeneity. With an anti-glaring film on the lens and a shield in front, we managed to achieve $UGR < 20$

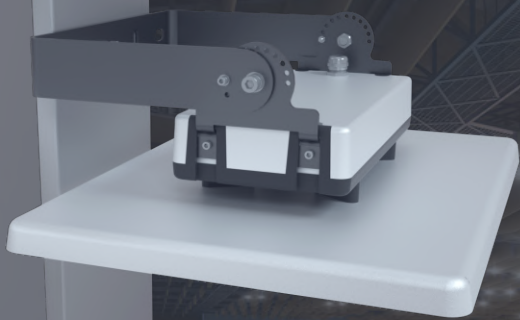
- **Simple installation**

With ceiling installation accessory equipped with mains lead, the two suspension points at the ceiling could be combined to One-Point installation. This saves time and cost for installation. And even vibrations and air movements are no longer able to twist it.

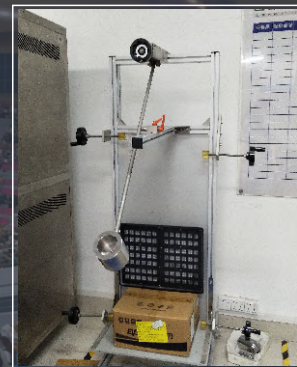


Anti-glaring
UGR<19

Glaring
UGR>27



IK10



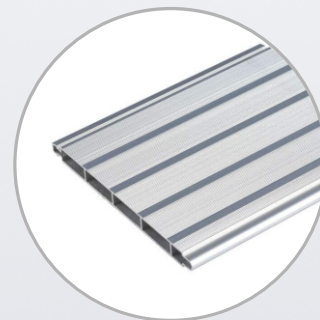
More Than Good



Cree LED



Meanwell Driver



Pure Aluminum
heatsink



Europe Design Patent

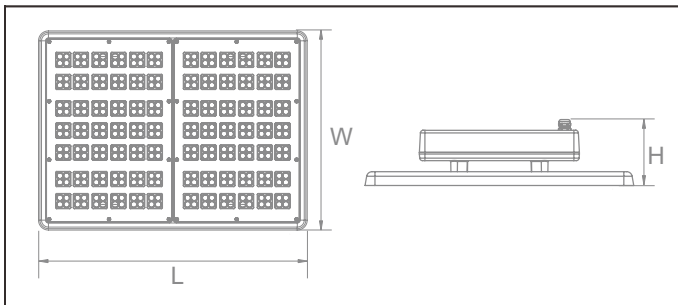




UGR < 19
IK 10

Features

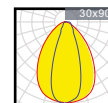
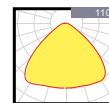
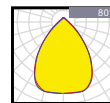
Housing: Pure Aluminum
Thermal Conductivity: 226 W/m·K
Led: CREE JK 3030
CRI: Ra>70 (80/90 for option)
SDCM: <6
Power Factor: >0.95
THD: <15
Driver: Meanwell ELG
Driver Efficiency: >93%
Protection: OTP, OCP, OVP, SCP
Surge Protection: 6KV
Waterproof: IP65
Impact Test: IK10
Electrical: 100-277V, 50/60Hz
Operating Temperature: -40~50°C
Tm21: L90B10>50,000H
Lifetime: 50,000H



Functions

ZigBee · PWM · DALI · 0/1~10V · Micro-wave

Optical options:



130lm/w

5 YEARS WARRANTY

Meanwell Driver

CREE LED

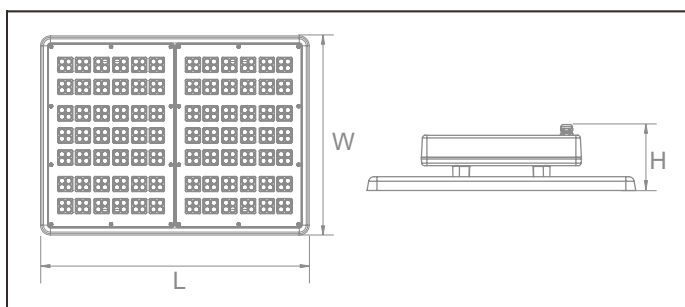
Model	Watt	Voltage	Lumen	CRI	IP	Dimension
BL060ME2F-CM	60W	100~277V	7800LM	>70 (80)	IP65	L362*W257*H120MM
BL100ME2F-CM	100W	100~277V	13000LM	>70 (80)	IP65	L362*W257*H120MM
BL150ME2F-CM	150W	100~277V	19500LM	>70 (80)	IP65	L415*W310*H120MM
BL200ME4F-CM	200W	100~277V	26000LM	>70 (80)	IP65	L487*W362*H120MM
BL300ME6F-CM	300W	100~277V	39000LM	>70 (80)	IP65	L720*W365*H130MM



UGR < 19
IK10

Features

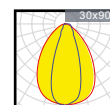
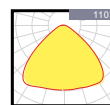
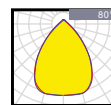
Housing: Pure Aluminum
Thermal Conductivity: 226 W/m·K
Led: CREE JK 3030
CRI: Ra>70 (80/90 for option)
SDCM: <6
Power Factor: >0.95
THD: <15
Driver: Osram
Driver Efficiency: >93%
Protection: OTP, OCP, OVP, SCP
Surge Protection: 10KV
Waterproof: IP65
Impact Test: IK10
Electrical: 220-240V, 50/60Hz
Operating Temperature: -40~50°C
Tm21: L90B10>50,000H
Lifetime: 50,000H



Functions

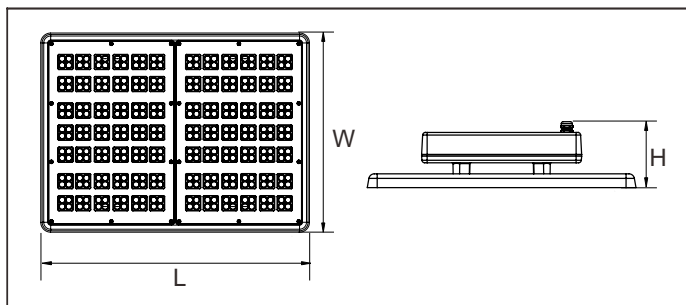
ZigBee · PWM · DALI · 0/1~10V · Micro-wave

Optical options:



Model	Watt	Voltage	Lumen	CRI	IP	Dimension
BL 060ME2F-CO	60W	220~240V	7800LM	>70 (80)	IP65	L362*W257*H120MM
BL 100ME2F-CO	100W	220~240V	13000LM	>70 (80)	IP65	L362*W257*H120MM
BL 150ME2F-CO	150W	220~240V	19500LM	>70 (80)	IP65	L415*W310*H120MM
BL 200ME4F-CO	200W	220~240V	26000LM	>70 (80)	IP65	L487*W362*H120MM
BL 300ME6F-CO	300W	220~240V	39000LM	>70(80)	IP65	L720*W365*H130MM
BL 360ME6F-CO	360W	220~240V	43200LM	>70(80)	IP65	L720*W365*H130MM

Packing



Model	L*W*H (mm)	Outer Carton(mm)			QTY/CTN	NW/CTN	GW/CTN
BL060ME2F	362*257*120	460	330	175	1	4.1	4.5
BL100ME2F	362*257*120	460	330	175	1	4.1	4.5
BL150ME2F	415*310*120	500	385	175	1	4.4	5.0
BL200ME4F	487*362*120	560	430	175	1	5.8	6.5
BL300ME6F	720*365*130	820	445	195	1	7.5	8.7
BL360ME6F	720*365*130	820	445	195	1	7.5	8.7